

Head & Foot Bolt

Heavy Duty Deadbolt Locks for Securing the Inactive Side of a Double Door Opening

No. 70106HM

Head and Foot Bolt

For use with hollow metal doors. Utilizes an RRBS No. 7080 lever tumbler deadbolt (3/4" bolt throw) with a 1" diameter stainless steel bolt extension.



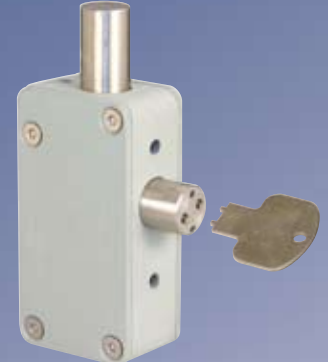
Head Bolt No. 70106HM/EL

Utilizes an RRBS No. 7080 lever tumbler deadbolt (3/4" bolt throw). Extended length 1" diameter stainless steel bolt and cover plate facilitates locking and unlocking of high, hollow metal doors (plate with paint primer).



Head and Foot Bolt No. 70105HM

For mortise mounting in a hollow metal door. Key unlocking means inaccessible with active door closed and locked. A simple cam linkage throws the bolt 3/4" via a double tooth key. The 1" diameter bolt and cam is of stainless steel. The case is a painted steel weldment.



Head and Foot Bolt No. 70105G

Identical to the 70105HM except furnished with side plates for use with grille or expanded metal doors.

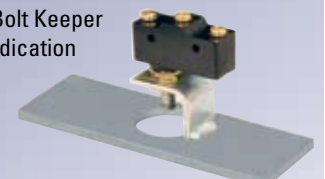


No. 70105FR

Floor bolt receptacle suitable for casting into concrete.

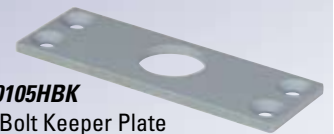
No. 70105HBK/S

Head Bolt Keeper with Indication Switch



No. 70105HBK

Head Bolt Keeper Plate 3/16" x 1-3/4" x 5"



R.R. BRINK LOCKING SYSTEMS, INC.

500 Earl Road • Shorewood, IL 60404
Tel: 815-744-7000 • Fax: 815-744-7020
www.rrbrink.com

Application

The common use for head and foot bolts is to secure the inactive side of a double door opening. RRBS head and foot bolts feature the extra heavy duty construction appropriate for jail and prison security doors.

Two types of RRBS head and foot bolts are available – paracentric (70106HM) and double tooth key (70105HM/G) operated. The former offers the added convenience and security of keying to a lever tumbler combination as compared to a plain tool. The latter prevents

unlocking of the inactive door of a pair when the active side is closed and locked.